

## ***Interim Management Report of Fund Performance***

*For the Six-Month Period Ended September 30, 2024*

*This Interim Management Report of Fund Performance contains financial highlights but does not contain either the interim financial report or annual financial statements of the investment fund. You may obtain a copy of the interim financial report or annual financial statements, at no cost, by calling 1-888-746-6344 (1-800-661-4578 if you live in Quebec) or by writing to us at 447 Portage Avenue, Winnipeg, Manitoba, R3B 3H5 (2001, boulevard Robert-Bourassa, bureau 2000, Montreal (Quebec), H3A 2A6 if you live in Quebec), or by visiting the SEDAR+ website at [www.sedarplus.ca](http://www.sedarplus.ca).*

*Securityholders may also contact us using one of these methods to request a copy of the investment fund's proxy voting policies and procedures, proxy voting disclosure record or quarterly portfolio disclosure. For more information, please refer to the Fund's Simplified Prospectus and Fund Facts, which may also be obtained, at no cost, using any of the methods outlined above.*

*For the Fund's current net asset values per security and for more recent information on general market events, please visit our website at [www.ig.ca](http://www.ig.ca).*

*References to "Advisor" or "Advisors" mean "Representative" or "Representatives" in Quebec.*

### **A NOTE ON FORWARD-LOOKING STATEMENTS**

*This report may contain forward-looking statements that reflect our current expectations or forecasts of future events. Forward-looking statements include statements that are predictive in nature, depend upon or refer to future events or conditions, or include words such as "expects", "anticipates", "intends", "plans", "believes", "estimates", "preliminary", "typical" and other similar expressions. In addition, these statements may relate to future corporate actions, future financial performance of a fund or a security and their future investment strategies and prospects. Forward-looking statements are inherently subject to, among other things, risks, uncertainties and assumptions that could cause actual events, results, performance or prospects to differ materially from those expressed in, or implied by, these forward-looking statements. These risks, uncertainties and assumptions include, without limitation, general economic, political and market factors in North America and internationally, interest and foreign exchange rates, the volatility of global equity and capital markets, business competition, technological change, changes in government regulations, changes in securities laws and regulations, changes in tax laws, unexpected judicial or regulatory proceedings, catastrophic events, outbreaks of disease or pandemics (such as COVID-19), and the ability of manager to attract or retain key employees. The foregoing list of important risks, uncertainties and assumptions is not exhaustive. Please consider these and other factors carefully and do not place undue reliance on forward-looking statements.*

*The forward-looking information contained in this report is current only as of the date of this report. There should not be an expectation that such information will in all circumstances be updated, supplemented or revised whether as a result of new information, changing circumstances, future events or otherwise.*

# IG MACKENZIE MORTGAGE AND SHORT TERM INCOME FUND

INTERIM MANAGEMENT REPORT OF FUND PERFORMANCE | For the Period Ended September 30, 2024

## Management Discussion of Fund Performance

November 12, 2024

This Management Discussion of Fund Performance presents the portfolio management team's view on the significant factors and developments that have affected the Fund's performance and outlook in the six-month period ended September 30, 2024 (the "period"). If the Fund was established during the period, "period" represents the period since inception.

In this report, "IGIM" and "the Manager" refer to I.G. Investment Management, Ltd., the manager of the Fund. In addition, net asset value ("NAV") refers to the value of the Fund as calculated for transaction purposes, on which the discussion of Fund performance is based.

Please read *A Note on Forward-Looking Statements* on the first page of this document.

## Results of Operations

### Investment Performance

The performance of all series in the current and previous periods is shown in the *Past Performance* section of the report. Performance will vary by series primarily because fees and expenses differ between series, or because securities of a series were not issued and outstanding for the entire reporting period. Please refer to the *Fund Formation and Series Information* section of this report for the varying management and administration fees payable by each series. The following comparison to market indices is intended to help investors understand the Fund's performance relative to the general performance of the markets. However, the Fund's mandate may be different from that of the indices shown.

For the six-month period ended September 30, 2024, the Series F securities returned 4.3% (after deducting fees and expenses paid by the Fund). In comparison, the Fund's broad-based index, the FTSE Canada Universe Bond Index, returned 5.6% and the Fund's narrow index, the FTSE Canada Short Term Bond Index, returned 4.7%. Given the Fund's mandate, the narrow index has been included as a more meaningful comparison.

In response to weak economic data, the Bank of Canada reduced its policy rate three times over the period to 4.25% from 5.00%. Bond yields declined in anticipation of a significantly lower policy rate. Canada's unemployment rate rose to 6.4%, highlighting labour market weakness, while wage growth remained elevated. Excess supply put pressure on prices, contributing to falling inflation.

The Fund underperformed both the broad-based index and the narrow index, with its pool of direct mortgages detracting from performance. Duration management (sensitivity to interest rates) also detracted from performance. Underweight exposure to federal bonds contributed to performance relative to both indices.

The Fund's exposure to bonds increased over the period, while exposure to mortgages decreased, in anticipation of lower Bank of Canada policy rates.

### Net Assets

The Fund's net assets increased by 4.7% during the period to \$3.5 billion. This change was composed primarily of \$147.3 million in net income (including any interest and/or dividend income) from investment performance, after deducting fees and expenses, and an increase of \$11.8 million due to net securityholder activity (including sales, redemptions and cash distributions).

## Fees and Expenses

The annualized management expense ratio ("MER") for each series during the period ended September 30, 2024, was generally similar to the MER for the year ended March 31, 2024. Total expenses paid vary from period to period mainly as a result of changes in average assets in each series. The MERs for all series are presented in the *Financial Highlights* section of this report.

## Recent Developments

The portfolio management team believes that economic weakness in the period justified the Bank of Canada's policy rate cuts, and that the pace of further economic deterioration will determine the frequency and magnitude of future reductions. Because the team expects accommodative monetary policy to continue in response to weakening economic indicators, the team favours having duration exposure (sensitivity to changes in interest rates) in North America.

## Other Developments

Effective May 3, 2024, Series A was redesignated as Series B; and effective May 10, 2024, Series J DSC was redesignated as Series J NL.

## Related Party Transactions

I.G. Investment Management, Ltd. is the Manager, Trustee and Portfolio Advisor of the Fund. The Fund is offered through the Advisors of Investors Group Financial Services Inc. and Investors Group Securities Inc., together referred to as the Distributors. The Manager, Portfolio Advisor, Distributors and Trustee are, indirectly, wholly owned subsidiaries of IGM Financial Inc.

The following sub-advisor provided investment services to the Fund:

- Mackenzie Financial Corporation

Mackenzie Financial Corporation is a wholly owned subsidiary of IGM Financial Inc.

The Fund paid a management fee to the Manager and Portfolio Advisor for management and portfolio advisory services (see *Management Fees*).

The Manager is also entitled to charge up to 0.15% on the value of the mortgage portfolio for mortgage administration and servicing costs.

The Fund also paid the Manager an administration fee and in exchange the Manager paid the operating costs and expenses of the Fund, except for certain specified costs.

The Trustee is responsible for the overall direction of the affairs of the Fund. The Fund paid the Trustee a fee for its services.

See *Fund Formation and Series Information* for the annual rates paid by each series (as a percentage of average net assets) for these fees.

Securityholders in Series F also pay an advisory fee directly to the Distributors. This fee is not included in the Fund's expenses.

During the period, the Fund invested in other funds also managed by the Manager or affiliates of the Manager. At September 30, 2024, the Fund had \$43.5 million (1.2% of the Fund's NAV) invested in underlying funds managed by Mackenzie. The Manager relied on standing instructions approved by the IG Wealth Management Funds Independent Review Committee for the execution of all such transactions.

# IG MACKENZIE MORTGAGE AND SHORT TERM INCOME FUND

INTERIM MANAGEMENT REPORT OF FUND PERFORMANCE | For the Period Ended September 30, 2024

Investment, if any, in unlisted open-ended funds managed by the Manager and/or affiliates of the Manager will be in series that do not pay fees. The exchange-traded funds (ETFs) into which the Fund may invest may have their own fees and expenses which reduce the value of the ETF. Generally, the Manager has determined that fees paid by an ETF are not duplicative with the fees paid by the Fund. However, where the ETF is managed by Mackenzie Financial Corporation, the ETF may distribute a fee rebate to the Fund to offset fees paid within the ETF.

During the period, the Fund received \$0.01 million in income distributions from investments in ETFs managed by the sub-advisor to offset fees paid within the ETFs. There is no assurance that these distributions will continue in the future.

Generally, the Fund acquires mortgages from the Manager. The fair value of the mortgages at acquisition is calculated using the Modified Lender's Rate method. Under the terms of a purchase transaction, the Manager retains the credit risk exposure associated with the mortgages acquired by the Fund. In order to address potential or perceived conflicts of interest as a result of acquiring mortgages from the Manager, the Manager relies on standing instructions approved by the IG Wealth Management Funds Independent Review Committee for all mortgage purchase transactions. During the period, the Fund did not acquire any mortgages from the Manager.

Certain other investment funds, distributed by IG Wealth Management, and other qualified investors may invest in Series P or S of this Fund. As at September 30, 2024, these series comprised approximately 89.0% of the Fund's net assets. The Manager relied on standing instructions approved by the IG Wealth Management Funds Independent Review Committee for the execution of all such transactions, which are based on the net asset value per security determined in accordance with the stated policies of the Fund on each transaction day. Investments by other investment funds in the Fund increase the risk of large redemption or purchase orders, which could result in larger than normal cash positions in the Fund for short periods of time. This could have an impact on the Fund's operations. However, the Manager uses various strategies to minimize the potential dilutive impact associated with large cash positions. These strategies may include transferring securities in-kind where possible, utilizing ETFs to maintain market exposure in lieu of cash and spreading transactions in smaller increments over a period of time.

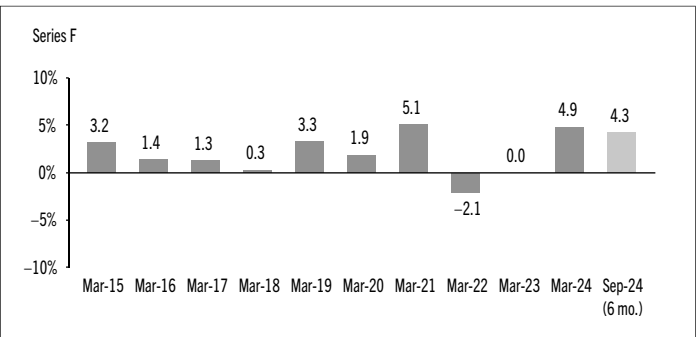
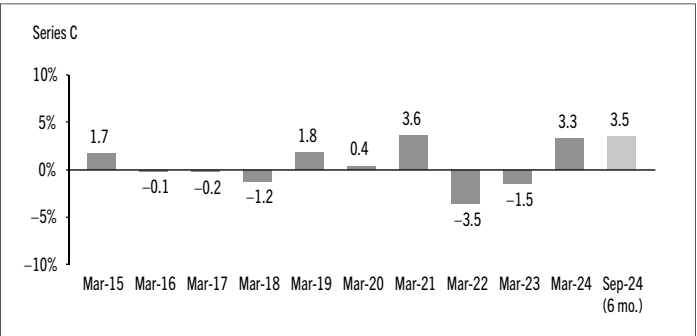
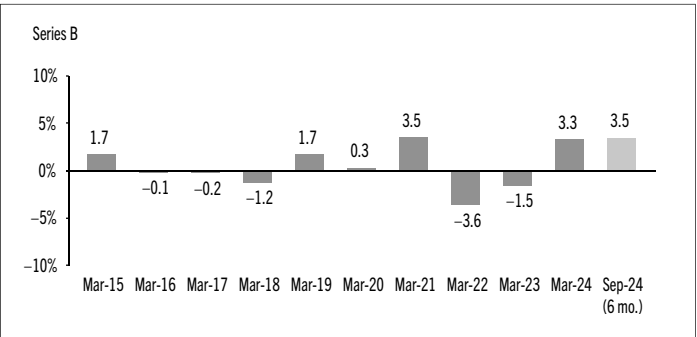
## Past Performance

The Fund's performance information assumes all distributions made by the Fund in the periods presented are reinvested in additional securities of the relevant series of the Fund. The performance information does not take into account sales, redemption, distribution or other optional charges, or income taxes payable by any investor that would have reduced returns or performance. The past performance of the Fund is not necessarily an indication of how it will perform in the future.

If you hold this Fund outside of a registered plan, income and capital gains distributions paid to you increase your income for tax purposes whether paid to you in cash or reinvested in additional securities of the Fund. The amount of reinvested taxable distributions is added to the adjusted cost base of the securities that you own. This would decrease your capital gain or increase your capital loss when you later redeem from the Fund, thereby ensuring that you are not taxed on this amount again. Please consult your tax advisor regarding your personal tax situation.

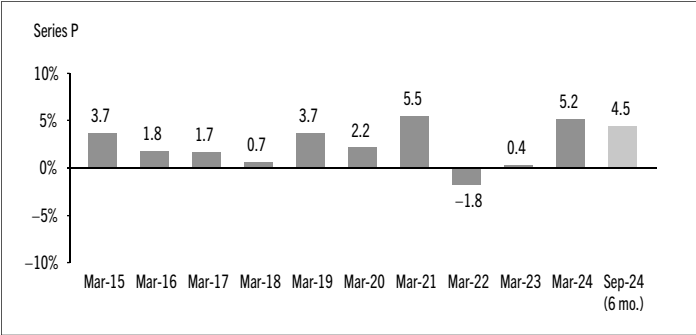
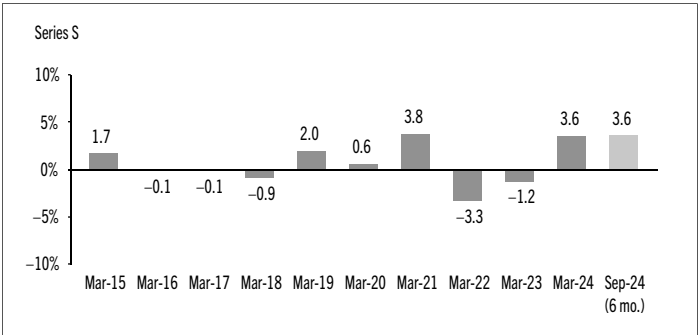
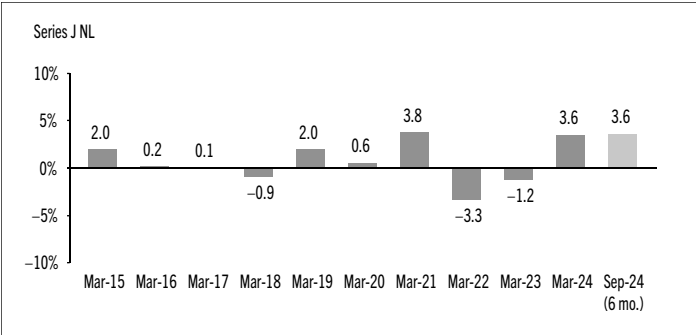
## Year-by-Year Returns

The following bar charts present the performance of each series of the Fund for each of the fiscal periods shown. The charts show, in percentage terms, how much an investment made on the first day of each fiscal period, or on the series inception or reinstatement date, as applicable, would have increased or decreased by the last day of the fiscal period presented. Series inception or reinstatement dates can be found under *Fund Formation and Series Information*.



# IG MACKENZIE MORTGAGE AND SHORT TERM INCOME FUND

INTERIM MANAGEMENT REPORT OF FUND PERFORMANCE | For the Period Ended September 30, 2024



# IG MACKENZIE MORTGAGE AND SHORT TERM INCOME FUND

INTERIM MANAGEMENT REPORT OF FUND PERFORMANCE | For the Period Ended September 30, 2024

## Summary of Investment Portfolio at September 30, 2024

PORTFOLIO ALLOCATION	% OF NAV
Bonds	60.4
Bonds	55.2
Long bond futures *	5.2
Mortgages	38.3
Mutual funds	1.0
Other assets (liabilities)	0.3
Exchange-traded funds	0.2
Equities	0.1
Currency options **	—
Cash and cash equivalents	(0.3)

REGIONAL ALLOCATION	% OF NAV
Canada	92.7
United States	5.3
Japan	0.3
Ireland	0.3
South Korea	0.3
Other net assets (liabilities)	0.3
Germany	0.2
China	0.2
Peru	0.2
United Kingdom	0.1
Australia	0.1
Mexico	0.1
Luxembourg	0.1
Chile	0.1
Cash and cash equivalents	(0.3)

SECTOR ALLOCATION	% OF NAV
Corporate bonds	38.9
Financials	38.3
Provincial bonds	13.6
Federal bonds	7.6
Mutual funds	1.0
Other net assets (liabilities)	0.3
Exchange-traded funds	0.2
Supranational	0.2
Term loans	0.1
Utilities	0.1
Cash and cash equivalents	(0.3)

BONDS BY CREDIT RATING †	% OF NAV
AAA	2.5
AA	6.9
A	21.7
BBB	13.2
Less than BBB	1.0
Unrated	9.9

MORTGAGES BY YEAR OF MATURITY	% OF NAV
2024	2.3
2025	10.2
2026	15.7
2027	6.7
2028	2.8
2029	0.6

BY INTEREST RATE	% OF NAV
less than 2.5%	17.3
2.5 – 3.0%	8.5
3.0 – 3.5%	2.2
greater than 3.5%	10.3

\* Notional values represent 5.2% of NAV for long bond futures.

\*\* Notional values represent 0.6% of NAV for currency options.

† Credit ratings and rating categories are based on ratings issued by a designated rating organization.

# IG MACKENZIE MORTGAGE AND SHORT TERM INCOME FUND

INTERIM MANAGEMENT REPORT OF FUND PERFORMANCE | For the Period Ended September 30, 2024

TOP 25 POSITIONS	% OF NAV
Issuer	
Cash and cash equivalents	4.9
Province of Quebec 2.30% 09-01-2029	3.5
Province of Ontario 4.00% 03-08-2029	3.5
Province of Quebec 2.75% 09-01-2028	3.4
Province of Ontario 3.40% 09-08-2028	3.3
Government of Canada 4.25% 12-01-2026 Real Return	1.2
Mackenzie High Quality Floating Rate Fund Series IG	1.0
Bank of America Corp. F/R 03-16-2028	1.0
Bank of Montreal 3.65% 04-01-2027	0.9
Royal Bank of Canada F/R 02-01-2033	0.9
The Toronto-Dominion Bank 1.94% 03-13-2025	0.8
The Toronto-Dominion Bank 4.21% 06-01-2027	0.7
Bruce Power LP 4.70% 12-21-2027	0.7
Government of Canada 3.25% 09-01-2028	0.7
iA Financial Corp. Inc. F/R 09-30-2084	0.7
Coastal Gaslink Pipeline LP 4.67% 06-30-2027	0.6
Gibson Energy Inc. 5.80% 07-12-2026	0.6
Fédération des Caisses Desjardins du Québec 2.42% 10-04-2024	0.6
Manulife Financial Corp. F/R 03-10-2033	0.6
Coastal Gaslink Pipeline LP 4.69% 09-30-2029	0.6
Canadian Imperial Bank of Commerce 2.75% 03-07-2025	0.6
Waste Management of Canada Corp. 2.60% 09-23-2026 Callable 2026	0.5
North West Redwater Partnership 4.25% 06-01-2029 Callable	0.5
Bank of Montreal 4.54% 12-18-2028	0.5
Enbridge Inc. 4.21% 02-22-2030	0.5
<b>Top long positions as a percentage of total net asset value</b>	<b>32.8</b>

*The Fund held no short positions at the end of the period.*

*The investments and percentages may have changed since September 30, 2024, due to the ongoing portfolio transactions of the Fund. Quarterly updates of holdings are available within 60 days of the end of each quarter except for March 31, the Fund's fiscal year-end, when they are available within 90 days.*

# IG MACKENZIE MORTGAGE AND SHORT TERM INCOME FUND

INTERIM MANAGEMENT REPORT OF FUND PERFORMANCE | For the Period Ended September 30, 2024

## Financial Highlights

The following tables show selected key financial information about the Fund and are intended to help you understand the Fund's financial performance for each of the fiscal periods presented below. If during the period a series was established or reinstated, "period" represents the period from inception or reinstatement to the end of that fiscal period. Series inception or reinstatement dates can be found under *Fund Formation and Series Information*.

### THE FUND'S NET ASSETS PER SECURITY (\$)¹

Series A⁴	Sep. 30 2024	Mar. 31 2024	Mar. 31 2023	Mar. 31 2022	Mar. 31 2021	Mar. 31 2020
<b>Net assets, beginning of period</b>	n/a	9.01	9.34	9.75	9.46	9.51
<b>Increase (decrease) from operations:</b>						
Total revenue	n/a	0.33	0.29	0.24	0.28	0.23
Total expenses	n/a	(0.18)	(0.18)	(0.19)	(0.19)	(0.18)
Realized gains (losses) for the period	n/a	(0.15)	(0.22)	0.01	0.17	0.06
Unrealized gains (losses) for the period	n/a	0.27	(0.08)	(0.38)	0.13	(0.07)
<b>Total increase (decrease) from operations²</b>	n/a	0.27	(0.19)	(0.32)	0.39	0.04
<b>Distributions:</b>						
From net investment income (excluding Canadian dividends)	n/a	(0.15)	(0.20)	(0.06)	(0.04)	(0.09)
From Canadian dividends	n/a	–	–	–	–	–
From capital gains	n/a	–	–	–	–	–
Return of capital	n/a	–	–	–	–	–
<b>Total annual distributions³</b>	n/a	(0.15)	(0.20)	(0.06)	(0.04)	(0.09)
<b>Net assets, end of period</b>	n/a	9.15	9.01	9.34	9.75	9.46
Series B	Sep. 30 2024	Mar. 31 2024	Mar. 31 2023	Mar. 31 2022	Mar. 31 2021	Mar. 31 2020
<b>Net assets, beginning of period</b>	9.14	9.00	9.34	9.74	9.45	9.51
<b>Increase (decrease) from operations:</b>						
Total revenue	0.17	0.33	0.29	0.24	0.28	0.23
Total expenses	(0.09)	(0.18)	(0.18)	(0.19)	(0.19)	(0.18)
Realized gains (losses) for the period	0.06	(0.14)	(0.23)	0.01	0.15	0.06
Unrealized gains (losses) for the period	0.21	0.26	(0.08)	(0.38)	0.13	(0.07)
<b>Total increase (decrease) from operations²</b>	0.35	0.27	(0.20)	(0.32)	0.37	0.04
<b>Distributions:</b>						
From net investment income (excluding Canadian dividends)	(0.08)	(0.15)	(0.20)	(0.06)	(0.04)	(0.09)
From Canadian dividends	–	–	–	–	–	–
From capital gains	–	–	–	–	–	–
Return of capital	–	–	–	–	–	–
<b>Total annual distributions³</b>	(0.08)	(0.15)	(0.20)	(0.06)	(0.04)	(0.09)
<b>Net assets, end of period</b>	9.37	9.14	9.00	9.34	9.74	9.45

Series C	Sep. 30 2024	Mar. 31 2024	Mar. 31 2023	Mar. 31 2022	Mar. 31 2021	Mar. 31 2020
<b>Net assets, beginning of period</b>	4.67	4.59	4.77	4.97	4.82	4.85
<b>Increase (decrease) from operations:</b>						
Total revenue	0.09	0.17	0.15	0.12	0.14	0.12
Total expenses	(0.05)	(0.09)	(0.09)	(0.09)	(0.08)	(0.08)
Realized gains (losses) for the period	0.01	(0.08)	(0.11)	–	0.08	0.03
Unrealized gains (losses) for the period	0.11	0.14	(0.04)	(0.19)	0.07	(0.03)
<b>Total increase (decrease) from operations²</b>	0.16	0.14	(0.09)	(0.16)	0.21	0.04
<b>Distributions:</b>						
From net investment income (excluding Canadian dividends)	(0.04)	(0.08)	(0.10)	(0.03)	(0.02)	(0.05)
From Canadian dividends	–	–	–	–	–	–
From capital gains	–	–	–	–	–	–
Return of capital	–	–	–	–	–	–
<b>Total annual distributions³</b>	(0.04)	(0.08)	(0.10)	(0.03)	(0.02)	(0.05)
<b>Net assets, end of period</b>	4.78	4.67	4.59	4.77	4.97	4.82
Series F	Sep. 30 2024	Mar. 31 2024	Mar. 31 2023	Mar. 31 2022	Mar. 31 2021	Mar. 31 2020
<b>Net assets, beginning of period</b>	9.40	9.25	9.60	10.01	9.71	9.76
<b>Increase (decrease) from operations:</b>						
Total revenue	0.18	0.34	0.30	0.25	0.29	0.24
Total expenses	(0.02)	(0.04)	(0.04)	(0.04)	(0.04)	(0.04)
Realized gains (losses) for the period	0.02	(0.13)	(0.19)	(0.02)	0.01	0.06
Unrealized gains (losses) for the period	0.22	0.27	(0.08)	(0.40)	0.13	(0.07)
<b>Total increase (decrease) from operations²</b>	0.40	0.44	(0.01)	(0.21)	0.39	0.19
<b>Distributions:</b>						
From net investment income (excluding Canadian dividends)	(0.16)	(0.30)	(0.34)	(0.20)	(0.19)	(0.23)
From Canadian dividends	–	–	–	–	–	–
From capital gains	–	–	–	–	–	–
Return of capital	–	–	–	–	–	–
<b>Total annual distributions³</b>	(0.16)	(0.30)	(0.34)	(0.20)	(0.19)	(0.23)
<b>Net assets, end of period</b>	9.63	9.40	9.25	9.60	10.01	9.71

(1) These calculations are prescribed by securities regulations and are not intended to be a reconciliation between opening and closing net assets per security. This information is derived from the Fund's unaudited interim financial statements and audited annual financial statements. The net assets per security presented in the financial statements may differ from the net asset value per security calculated for fund pricing purposes. An explanation of these differences, if any, can be found in the *Notes to Financial Statements*.

(2) Net assets and distributions are based on the actual number of securities outstanding at the relevant time. The increase/decrease from operations is based on the weighted average number of securities outstanding over the fiscal period.

(3) Distributions were paid in cash, reinvested in additional securities of the Fund, or both.

(4) Effective May 3, 2024, Series A was redesignated as Series B; and effective May 10, 2024, Series J DSC was redesignated as Series J NL.

# IG MACKENZIE MORTGAGE AND SHORT TERM INCOME FUND

INTERIM MANAGEMENT REPORT OF FUND PERFORMANCE | For the Period Ended September 30, 2024

## THE FUND'S NET ASSETS PER SECURITY (\$)¹ (cont'd)

	Sep. 30 2024	Mar. 31 2024	Mar. 31 2023	Mar. 31 2022	Mar. 31 2021	Mar. 31 2020
<b>Series J DSC⁴</b>						
Net assets, beginning of period	n/a	9.07	9.41	9.81	9.52	9.57
Increase (decrease) from operations:						
Total revenue	n/a	0.34	0.29	0.24	0.28	0.23
Total expenses	n/a	(0.15)	(0.15)	(0.16)	(0.16)	(0.16)
Realized gains (losses) for the period	n/a	(0.16)	(0.24)	0.03	0.16	0.06
Unrealized gains (losses) for the period	n/a	0.27	(0.08)	(0.38)	0.13	(0.07)
<b>Total increase (decrease) from operations²</b>	<b>n/a</b>	<b>0.30</b>	<b>(0.18)</b>	<b>(0.27)</b>	<b>0.41</b>	<b>0.06</b>
<b>Distributions:</b>						
From net investment income (excluding Canadian dividends)	n/a	(0.18)	(0.22)	(0.08)	(0.07)	(0.12)
From Canadian dividends	n/a	—	—	—	—	—
From capital gains	n/a	—	—	—	—	—
Return of capital	n/a	—	—	—	—	—
<b>Total annual distributions³</b>	<b>n/a</b>	<b>(0.18)</b>	<b>(0.22)</b>	<b>(0.08)</b>	<b>(0.07)</b>	<b>(0.12)</b>
<b>Net assets, end of period</b>	<b>n/a</b>	<b>9.21</b>	<b>9.07</b>	<b>9.41</b>	<b>9.81</b>	<b>9.52</b>
<b>Series J NL</b>						
Net assets, beginning of period	9.20	9.05	9.39	9.80	9.50	9.56
Increase (decrease) from operations:						
Total revenue	0.17	0.33	0.29	0.24	0.28	0.23
Total expenses	(0.08)	(0.15)	(0.15)	(0.16)	(0.16)	(0.16)
Realized gains (losses) for the period	0.08	(0.16)	(0.18)	0.03	0.13	0.06
Unrealized gains (losses) for the period	0.21	0.27	(0.08)	(0.38)	0.13	(0.07)
<b>Total increase (decrease) from operations²</b>	<b>0.38</b>	<b>0.29</b>	<b>(0.12)</b>	<b>(0.27)</b>	<b>0.38</b>	<b>0.06</b>
<b>Distributions:</b>						
From net investment income (excluding Canadian dividends)	(0.10)	(0.18)	(0.22)	(0.08)	(0.07)	(0.12)
From Canadian dividends	—	—	—	—	—	—
From capital gains	—	—	—	—	—	—
Return of capital	—	—	—	—	—	—
<b>Total annual distributions³</b>	<b>(0.10)</b>	<b>(0.18)</b>	<b>(0.22)</b>	<b>(0.08)</b>	<b>(0.07)</b>	<b>(0.12)</b>
<b>Net assets, end of period</b>	<b>9.43</b>	<b>9.20</b>	<b>9.05</b>	<b>9.39</b>	<b>9.80</b>	<b>9.50</b>

	Sep. 30 2024	Mar. 31 2024	Mar. 31 2023	Mar. 31 2022	Mar. 31 2021	Mar. 31 2020
<b>Series P</b>						
Net assets, beginning of period	10.32	10.16	10.54	10.99	10.66	10.71
Increase (decrease) from operations:						
Total revenue	0.20	0.38	0.33	0.28	0.32	0.26
Total expenses	—	(0.01)	(0.01)	(0.01)	(0.01)	(0.01)
Realized gains (losses) for the period	0.01	(0.15)	(0.23)	(0.01)	0.11	0.07
Unrealized gains (losses) for the period	0.24	0.30	(0.09)	(0.43)	0.15	(0.08)
<b>Total increase (decrease) from operations²</b>	<b>0.45</b>	<b>0.52</b>	<b>—</b>	<b>(0.17)</b>	<b>0.57</b>	<b>0.24</b>
<b>Distributions:</b>						
From net investment income (excluding Canadian dividends)	(0.19)	(0.36)	(0.41)	(0.26)	(0.25)	(0.29)
From Canadian dividends	—	—	—	—	—	—
From capital gains	—	—	—	—	—	—
Return of capital	—	—	—	—	—	—
<b>Total annual distributions³</b>	<b>(0.19)</b>	<b>(0.36)</b>	<b>(0.41)</b>	<b>(0.26)</b>	<b>(0.25)</b>	<b>(0.29)</b>
<b>Net assets, end of period</b>	<b>10.58</b>	<b>10.32</b>	<b>10.16</b>	<b>10.54</b>	<b>10.99</b>	<b>10.66</b>
<b>Series S</b>						
Net assets, beginning of period	9.32	9.18	9.52	9.93	9.63	9.69
Increase (decrease) from operations:						
Total revenue	0.18	0.34	0.29	0.25	0.28	0.23
Total expenses	(0.08)	(0.15)	(0.16)	(0.16)	(0.17)	(0.16)
Realized gains (losses) for the period	0.01	(0.14)	(0.18)	(0.02)	0.12	0.06
Unrealized gains (losses) for the period	0.22	0.27	(0.08)	(0.39)	0.13	(0.07)
<b>Total increase (decrease) from operations²</b>	<b>0.33</b>	<b>0.32</b>	<b>(0.13)</b>	<b>(0.32)</b>	<b>0.36</b>	<b>0.06</b>
<b>Distributions:</b>						
From net investment income (excluding Canadian dividends)	(0.10)	(0.18)	(0.23)	(0.08)	(0.07)	(0.09)
From Canadian dividends	—	—	—	—	—	—
From capital gains	—	—	—	—	—	—
Return of capital	—	—	—	—	—	—
<b>Total annual distributions³</b>	<b>(0.10)</b>	<b>(0.18)</b>	<b>(0.23)</b>	<b>(0.08)</b>	<b>(0.07)</b>	<b>(0.09)</b>
<b>Net assets, end of period</b>	<b>9.56</b>	<b>9.32</b>	<b>9.18</b>	<b>9.52</b>	<b>9.93</b>	<b>9.63</b>



# IG MACKENZIE MORTGAGE AND SHORT TERM INCOME FUND

INTERIM MANAGEMENT REPORT OF FUND PERFORMANCE | For the Period Ended September 30, 2024

## RATIOS AND SUPPLEMENTAL DATA

	Sep. 30 2024	Mar. 31 2024	Mar. 31 2023	Mar. 31 2022	Mar. 31 2021	Mar. 31 2020
<b>Series A<sup>5</sup></b>						
Total net asset value (\$000) <sup>1</sup>	n/a	29,543	40,591	61,283	101,958	148,202
Securities outstanding (000) <sup>1</sup>	n/a	3,230	4,507	6,558	10,459	15,673
Management expense ratio (%) <sup>2</sup>	n/a	1.96	1.96	1.94	1.94	1.93
Management expense ratio before waivers or absorptions (%) <sup>2</sup>	n/a	1.96	1.96	1.94	1.94	1.93
Trading expense ratio (%) <sup>3</sup>	n/a	–	0.01	0.01	–	–
Portfolio turnover rate (%) <sup>4</sup>	n/a	49.14	34.81	52.38	48.94	63.87
Net asset value per security (\$)	n/a	9.15	9.01	9.34	9.75	9.46
<b>Series B</b>	Sep. 30 2024	Mar. 31 2024	Mar. 31 2023	Mar. 31 2022	Mar. 31 2021	Mar. 31 2020
Total net asset value (\$000) <sup>1</sup>	43,575	18,409	25,366	38,578	65,479	84,087
Securities outstanding (000) <sup>1</sup>	4,649	2,014	2,818	4,131	6,722	8,899
Management expense ratio (%) <sup>2</sup>	1.95	1.96	1.96	1.94	1.94	1.93
Management expense ratio before waivers or absorptions (%) <sup>2</sup>	1.95	1.96	1.96	1.94	1.94	1.93
Trading expense ratio (%) <sup>3</sup>	–	–	0.01	0.01	–	–
Portfolio turnover rate (%) <sup>4</sup>	16.05	49.14	34.81	52.38	48.94	63.87
Net asset value per security (\$)	9.37	9.14	9.00	9.34	9.74	9.45
<b>Series C</b>	Sep. 30 2024	Mar. 31 2024	Mar. 31 2023	Mar. 31 2022	Mar. 31 2021	Mar. 31 2020
Total net asset value (\$000) <sup>1</sup>	29,403	30,721	38,941	52,616	75,291	114,336
Securities outstanding (000) <sup>1</sup>	6,147	6,586	8,477	11,038	15,142	23,705
Management expense ratio (%) <sup>2</sup>	1.92	1.93	1.93	1.91	1.91	1.90
Management expense ratio before waivers or absorptions (%) <sup>2</sup>	1.92	1.93	1.93	1.91	1.91	1.90
Trading expense ratio (%) <sup>3</sup>	–	–	0.01	0.01	–	–
Portfolio turnover rate (%) <sup>4</sup>	16.05	49.14	34.81	52.38	48.94	63.87
Net asset value per security (\$)	4.78	4.66	4.59	4.77	4.97	4.82
<b>Series F</b>	Sep. 30 2024	Mar. 31 2024	Mar. 31 2023	Mar. 31 2022	Mar. 31 2021	Mar. 31 2020
Total net asset value (\$000) <sup>1</sup>	294,627	274,569	279,905	311,903	316,101	143,653
Securities outstanding (000) <sup>1</sup>	30,577	29,225	30,252	32,491	31,575	14,796
Management expense ratio (%) <sup>2</sup>	0.44	0.45	0.44	0.43	0.43	0.43
Management expense ratio before waivers or absorptions (%) <sup>2</sup>	0.44	0.45	0.44	0.43	0.43	0.43
Trading expense ratio (%) <sup>3</sup>	–	–	0.01	0.01	–	–
Portfolio turnover rate (%) <sup>4</sup>	16.05	49.14	34.81	52.38	48.94	63.87
Net asset value per security (\$)	9.64	9.40	9.25	9.60	10.01	9.71
<b>Series J DSC<sup>5</sup></b>	Sep. 30 2024	Mar. 31 2024	Mar. 31 2023	Mar. 31 2022	Mar. 31 2021	Mar. 31 2020
Total net asset value (\$000) <sup>1</sup>	n/a	12,899	16,502	26,533	58,041	85,233
Securities outstanding (000) <sup>1</sup>	n/a	1,401	1,820	2,820	5,914	8,955
Management expense ratio (%) <sup>2</sup>	n/a	1.67	1.67	1.66	1.66	1.66
Management expense ratio before waivers or absorptions (%) <sup>2</sup>	n/a	1.67	1.67	1.66	1.66	1.66
Trading expense ratio (%) <sup>3</sup>	n/a	–	0.01	0.01	–	–
Portfolio turnover rate (%) <sup>4</sup>	n/a	49.14	34.81	52.38	48.94	63.87
Net asset value per security (\$)	n/a	9.21	9.07	9.41	9.81	9.52

	Sep. 30 2024	Mar. 31 2024	Mar. 31 2023	Mar. 31 2022	Mar. 31 2021	Mar. 31 2020
<b>Series J NL</b>						
Total net asset value (\$000) <sup>1</sup>	19,176	6,547	8,835	10,845	23,825	28,554
Securities outstanding (000) <sup>1</sup>	2,034	712	976	1,154	2,431	3,004
Management expense ratio (%) <sup>2</sup>	1.67	1.69	1.68	1.66	1.66	1.65
Management expense ratio before waivers or absorptions (%) <sup>2</sup>	1.67	1.69	1.68	1.66	1.66	1.65
Trading expense ratio (%) <sup>3</sup>	–	–	0.01	0.01	–	–
Portfolio turnover rate (%) <sup>4</sup>	16.05	49.14	34.81	52.38	48.94	63.87
Net asset value per security (\$)	9.43	9.19	9.05	9.39	9.80	9.50
<b>Series P</b>	Sep. 30 2024	Mar. 31 2024	Mar. 31 2023	Mar. 31 2022	Mar. 31 2021	Mar. 31 2020
Total net asset value (\$000) <sup>1</sup>	3,070,789	2,926,758	3,215,054	3,864,504	4,632,229	4,070,827
Securities outstanding (000) <sup>1</sup>	290,299	283,775	316,497	366,638	421,479	381,898
Management expense ratio (%) <sup>2</sup>	0.07	0.08	0.08	0.07	0.07	0.07
Management expense ratio before waivers or absorptions (%) <sup>2</sup>	0.07	0.08	0.08	0.07	0.07	0.07
Trading expense ratio (%) <sup>3</sup>	–	–	0.01	0.01	–	–
Portfolio turnover rate (%) <sup>4</sup>	16.05	49.14	34.81	52.38	48.94	63.87
Net asset value per security (\$)	10.58	10.31	10.16	10.54	10.99	10.66
<b>Series S</b>	Sep. 30 2024	Mar. 31 2024	Mar. 31 2023	Mar. 31 2022	Mar. 31 2021	Mar. 31 2020
Total net asset value (\$000) <sup>1</sup>	52,789	50,802	52,961	61,795	68,289	62,917
Securities outstanding (000) <sup>1</sup>	5,524	5,451	5,771	6,490	6,876	6,532
Management expense ratio (%) <sup>2</sup>	1.67	1.68	1.68	1.67	1.67	1.67
Management expense ratio before waivers or absorptions (%) <sup>2</sup>	1.67	1.68	1.68	1.67	1.67	1.67
Trading expense ratio (%) <sup>3</sup>	–	–	0.01	0.01	–	–
Portfolio turnover rate (%) <sup>4</sup>	16.05	49.14	34.81	52.38	48.94	63.87
Net asset value per security (\$)	9.56	9.32	9.18	9.52	9.93	9.63

- (1) This information is provided as at the end of the fiscal period shown.
- (2) Management expense ratio ("MER") is based on total expenses, excluding commissions and other portfolio transaction costs, income taxes and withholding taxes, for the stated period and is expressed as an annualized percentage of daily average net assets during the period, except as noted. In the period a series is established, the MER is annualized from the date of inception to the end of the period. Where the Fund directly invests in securities of another fund (including exchange-traded funds or "ETFs"), the MERs presented for the Fund include the portion of MERs of the other fund(s) attributable to this investment. Any income distributions received from ETFs managed by affiliates of the Manager, with the intention of offsetting fees paid within those ETFs but which are not considered to be duplicative fees under regulatory requirements, are treated as waived expenses for MER purposes. The Manager may waive or absorb operating expenses at its discretion and stop waiving or absorbing such expenses at any time without notice.
- (3) The trading expense ratio ("TER") represents total commissions and other portfolio transaction costs incurred as an annualized percentage of daily average net assets during the period. Where the Fund invests in securities of another fund (including ETFs), the TERs presented for the Fund include the portion of TERs of the other fund(s) attributable to this investment.
- (4) The Fund's portfolio turnover rate indicates how actively the Fund's portfolio advisor manages its portfolio investments. A portfolio turnover rate of 100% is equivalent to the Fund buying and selling all of the securities in its portfolio once in the course of the period. The higher the Fund's portfolio turnover rate in a period, the greater the trading costs payable by the Fund in the period, and the greater the chance of an investor receiving taxable capital gains in the year. There is not necessarily a relationship between a high turnover rate and the performance of a fund. The portfolio turnover rate is not provided when the Fund is less than one year old. The value of any trades to realign the Fund's portfolio after a fund merger, if any, is excluded from the portfolio turnover rate.
- (5) Effective May 3, 2024, Series A was redesignated as Series B; and effective May 10, 2024, Series J DSC was redesignated as Series J NL.

# IG MACKENZIE MORTGAGE AND SHORT TERM INCOME FUND

INTERIM MANAGEMENT REPORT OF FUND PERFORMANCE | For the Period Ended September 30, 2024

---

## Management Fees

The Fund pays a management fee, and this fee, paid by each series, is calculated as a percentage of the net asset value of the series at the close of each business day (see *Fund Formation and Series Information* for rates payable by each series). Generally, management fees pay the costs incurred to provide investment advisory and management services, as well as distribution-related services provided by the Distributors.

However, in the case of Series F, securityholders pay the Distributor an advisory fee (separate from the management fee) directly. Therefore, the management fee in that series is used for investment advisory and management services only.

For all other retail series (i.e. those that exclude Series R, P and S, if issued), approximately 47% of management fees paid during the period was used for investment advisory and management services, and approximately 53% related to distribution-related services. This may vary by series.

# IG MACKENZIE MORTGAGE AND SHORT TERM INCOME FUND

INTERIM MANAGEMENT REPORT OF FUND PERFORMANCE | For the Period Ended September 30, 2024

## Fund Formation and Series Information

The Fund may have undergone a number of changes, such as a reorganization or a change in manager, mandate or name. A history of the major changes affecting the Fund in the last 10 years can be found in the Fund’s Simplified Prospectus.

Date of Formation: August 3, 1973

The Fund may issue an unlimited number of securities of each series. The number of issued and outstanding securities of each series is disclosed under *Financial Highlights*.

Series B securities are offered to retail investors investing a minimum of \$50, who generally have household investments less than \$500,000.

Series F securities are offered to investors investing a minimum of \$50, who have entered into an agreement with a Distributor.

Series J NL securities are offered to investors who generally have household investments of \$500,000 or more.

Series P securities are offered exclusively to mutual funds managed by IGIM (or its affiliates) and certain institutional investors in connection with fund-of-fund arrangements.

Series S securities are offered exclusively to segregated funds managed by The Canada Life Assurance Company (or its affiliates).

Series A and Series J DSC are no longer available for sale. Effective May 3, 2024, Series A was redesignated as Series B; and effective May 10, 2024, Series J DSC was redesignated as Series J NL.

Series C securities are no longer available for sale.

Series	Inception/ Reinstatement Date	Management fee (%)	Service fee (%)	Administration fee (%)	Trustee fee (%)
Series A	None issued	1.55	–	0.08	0.05
Series B	July 13, 2012	1.55	–	0.08	0.05
Series C	August 3, 1973	1.55	–	0.08	0.05
Series F	July 12, 2013	0.20	–	0.08	0.05
Series J DSC	None issued	1.30	–	0.08	0.05
Series J NL	July 13, 2012	1.30	–	0.08	0.05
Series P	July 13, 2009	–	–	–	–
Series S	November 16, 2009	1.30	–	0.10	0.05

The fee rates in the table above are rounded to two decimals.

The original start date was July 13, 2012, for Series A and Series J DSC. Effective May 3, 2024, Series A was redesignated as Series B; and effective May 10, 2024, Series J DSC was redesignated as Series J NL.